



STAR
outdoor
it's easy!

Continuous Blower Inflatables MANUAL

Packing List	2
Assembly	3
Securing	4
Maintenance and Safety	5
Blower Operation	6
Contact Information	7



Included with purchase

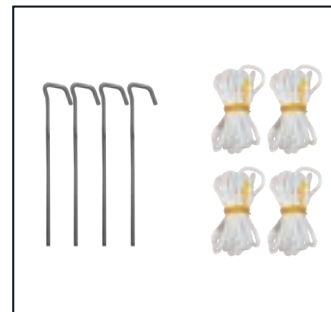
INFLATABLE



CONTINUOUS BLOWER*



ROPE & PEGS*



CARRY BAG

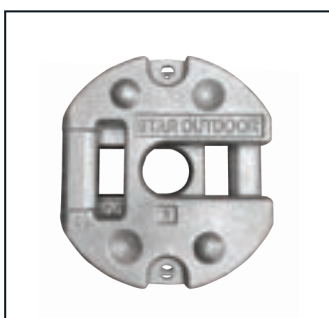


Additional Extras (recommended Securing Kit)

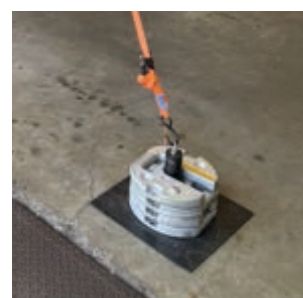
RATCHET STRAP*



WEIGHT PLATE



WEIGHT STAND



products may differ to what is pictured



Unpack the inflatable and unfold on the ground



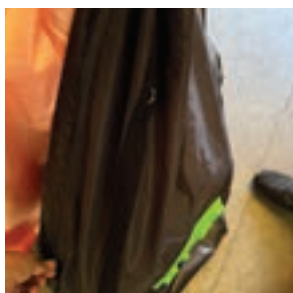
Ensure the blower is sitting upright



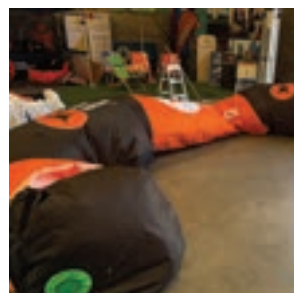
Ensure the zips are closed prior to inflating



Ensure the blower switch is turned on



Close the zips once the blower is switched on/plugged in



The inflatable will begin rapidly inflating.



Always read the safety instructions printed on the leg are followed correctly.

DISASSEMBLY

Complete steps backwards, turn off blower. and UNZIP zips, wait for a few minutes start rolling from the non blower leg like a sleeping bag, two people recommended.

Option 1 - Pegs through “D” Rings



Locate the “D” rings around the base of the inflatable. Secure peg into ground using a hammer.

Option 2 - Pegs & Guy Rope to loops



Using the rope provided, thread through the loop on the inflatable.



Hook the bottom of the rope to a peg and secure by tying a knot and hammering peg.



Set up is complete once all rope and pegs have been used.



Option 3 - Ratchet Straps from loops to weight stand



With the straps provided, hook them to each of the 4x loops on the top of the leg.



Hook the other end of the strap to the weight stand eye bolt, once semi taut, crank to further tighten.



Set up is complete once all 4x securing kits are in place.



SAFETY WARNING

- Fair weather and indoor use only.
- Suffocation warning: stay clear of arch during deflation.
- Do not leave inflatable unattended during inflation or deflation.
- Do not suspend or attach anything other than approved parts to arch as it can impact safety and performance.
- In adverse weather please pack down your Inflatable, Star Outdoor does not take any responsibility for misuse or injury.

MAINTENANCE & CARE

- To clean, use a wet rag to scrub with a multipurpose cleaner.
- The inflatable is designed to remain continuously inflated even if holes are present, if the inflatable is unable to remain inflated due to significant damage, do not use the inflatable as it becomes hazardous.

NOTES

- DO NOT open zipper on inflatable once unit is inflated, as it will loose air rapidly.
- Keep arch away from sharp objects.

Recommended weight as per our engineers report:

INFLATABLE SIZE	NO. OF WEIGHT STANDS	ADDITIONAL WEIGHT PER STAND (KG)
4.0m - 6.0m	4	40
8.0m	4	50
10.0m +	4	80



WARNINGS:

- NEVER attempt to disassemble or close openings while pump is in operation.
- NEVER leave blower unattended while in use.
- DO NOT allow sand, small rocks, or other debris to be sucked into the inflation or deflation port while operating.
- DO NOT use under wet conditions. Keep away from water.
- DO NOT look into or point the inflate opening toward eyes while pump is in operation.
- This blower cannot be used for inflating tires.
- ELECTRIC SHOCK RISK: Do not operate under moist conditions; store indoors.
- Keep pump away from children.
- If the AC supply cord is damaged, discard the air pump to avoid a hazard.

CAUTION: Blower will be hot to the touch after prolonged use.

HAVE ANY QUESTIONS? CONTACT US BELOW

STAR OUTDOOR
B1/57 Assembly Street,
Salisbury QLD, 4107
1300 721 877
staroutdoor.com.au